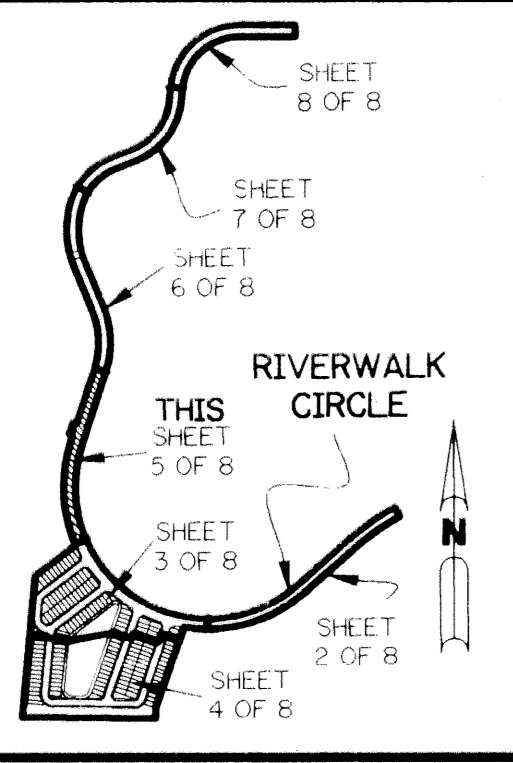


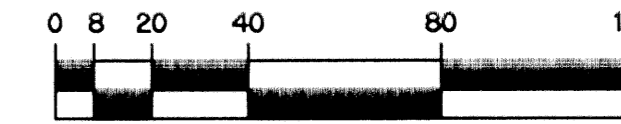
RIVERWALK - PLAT SIX

A PARCEL OF LAND LYING IN SECTION 21, TOWNSHIP 43 SOUTH,
RANGE 42 EAST, CITY OF WEST PALM BEACH,
PALM BEACH COUNTY, FLORIDA.

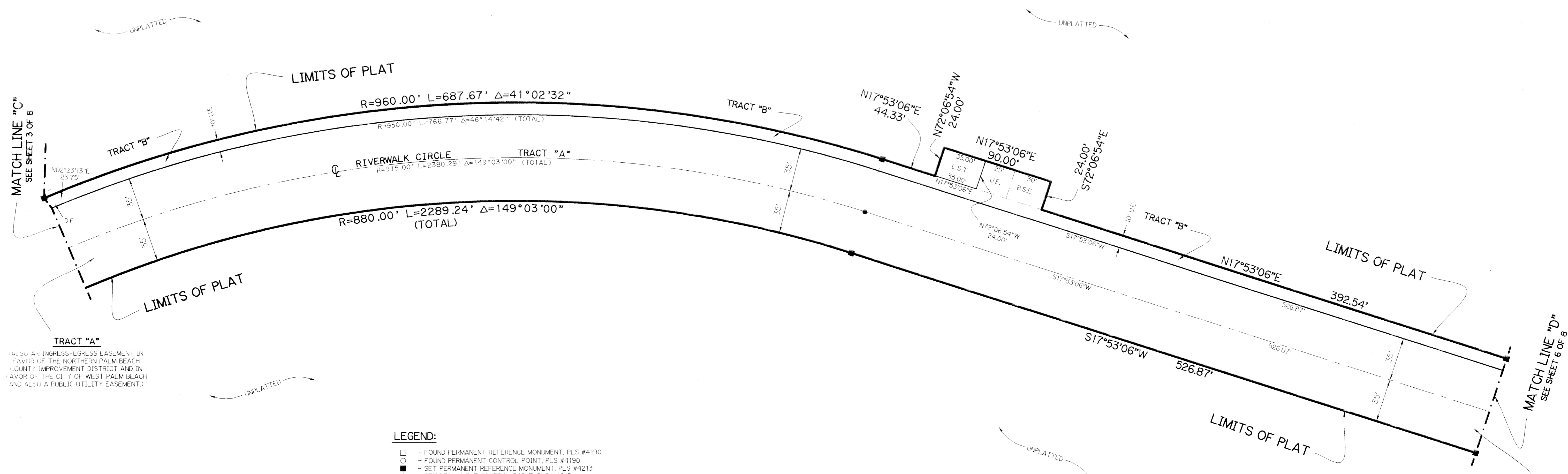
SHEET 5 OF 8 MAY, 1997



KEY MAP
N.T.S.



SCALE: 1" = 40'



TRACT "A"
141.50' AIR INGRESS-EGRESS EASEMENT IN FAVOR OF THE NORTHERN PALM BEACH COUNTY IMPROVEMENT DISTRICT AND IN FAVOR OF THE CITY OF WEST PALM BEACH AND ALSO A PUBLIC UTILITY EASEMENT.)

TRACT "A"
(ALSO AN INGRESS-EGRESS EASEMENT IN FAVOR OF THE NORTHERN PALM BEACH COUNTY IMPROVEMENT DISTRICT AND IN FAVOR OF THE CITY OF WEST PALM BEACH AND ALSO A PUBLIC UTILITY EASEMENT.)

- LEGEND:
- - FOUND PERMANENT REFERENCE MONUMENT, PLS #4190
 - - FOUND PERMANENT CONTROL POINT, PLS #4190
 - - SET PERMANENT REFERENCE MONUMENT, PLS #4213
 - - SET PERMANENT CONTROL POINT, PLS #4213
 - Δ - DELTA ANGLE
 - B.E. - BUFFER EASEMENT
 - D.E. - DRAINAGE EASEMENT
 - L - ARC LENGTH
 - L.M.E. - LAKE MAINTENANCE EASEMENT
 - N.R. - NOT RADIAL
 - N.T.S. - NOT TO SCALE
 - O.R.B. - OFFICIAL RECORD BOOK
 - P.B. - PLAT BOOK
 - PGS. - PAGES
 - PLS - PROFESSIONAL LAND SURVEYOR
 - P.S.M. - PROFESSIONAL SURVEYOR AND MAPPER
 - R - RADIUS
 - R.E. - RIVERWALK EASEMENT
 - R/W - RIGHT-OF-WAY
 - S.T. - SURVEY TIE
 - U.E. - UTILITY EASEMENT
 - L.S.T. - LIFT STATION TRACT
 - B.S.E. - BELL SOUTH EASEMENT

THIS INSTRUMENT PREPARED BY
PERRY C. WHITE, P.L.S. 4213, STATE OF FLORIDA
LAWSON, NOBLE AND WEBB, INC.
ENGINEERS PLANNERS SURVEYORS
WEST PALM BEACH, FLORIDA

SUBDIVISION RIVERWALK PLAT SIX
 BOOK 80
 PAGE 49
 FLOOD MAP #
 FLOOD ZONE
 QUAD #
 ZONING
 ZIP CODE
 PUD NAME City of West Palm Beach
 TAE 870